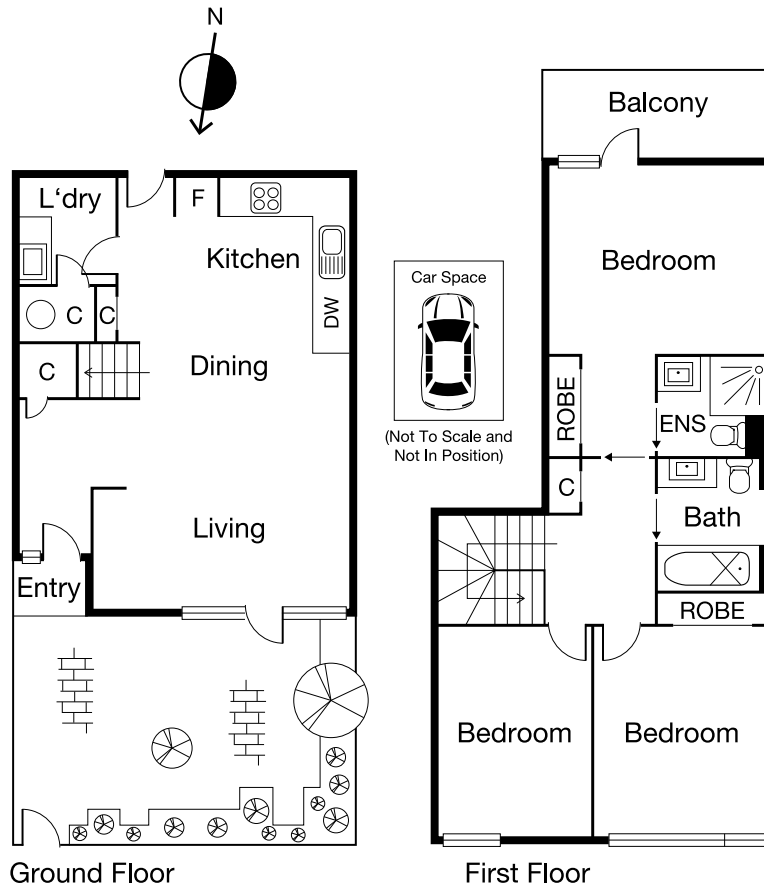


SOUTH MELBOURNE 133 Park Street



CAYZER

SOUTH MELBOURNE 133 Park Street



CITY EDGE: MELBOURNE'S ORIGINAL URBAN VILLAGE

- Inner-city 'urban village' housing at its finest
- Bright, fully refurbished townhouse
- Walk to South Melbourne Markets, Albert Park Lake, the Botanic Gardens and the Southbank Arts Precinct

Comprising: Secure entry via paved courtyard into spacious open plan living and dining. Brand new gourmet kitchen and ample storage, and separate laundry.

Upstairs: master bedroom with private courtyard, ensuite and built in robes, two bright bedrooms serviced by sparkling second bathroom. Features: Split system heating and cooling, two secure entrances, car space and landscaped gardens.

	3	2	1
Auction	Saturday 1 June at 11am		
Inspection	As advertised or by appointment		
Contact	Geoff Cayzer	9690 9782	
	Jason De Stefano	0413 292 666	
	Jordan Gravestein	0448 250 193	
MeL Ref	57 H1		



CAYZER

Albert Park 330 Montague Street 03 9699 5999
Port Melbourne 370 Bay Street 03 9646 0812

cayzer.com.au